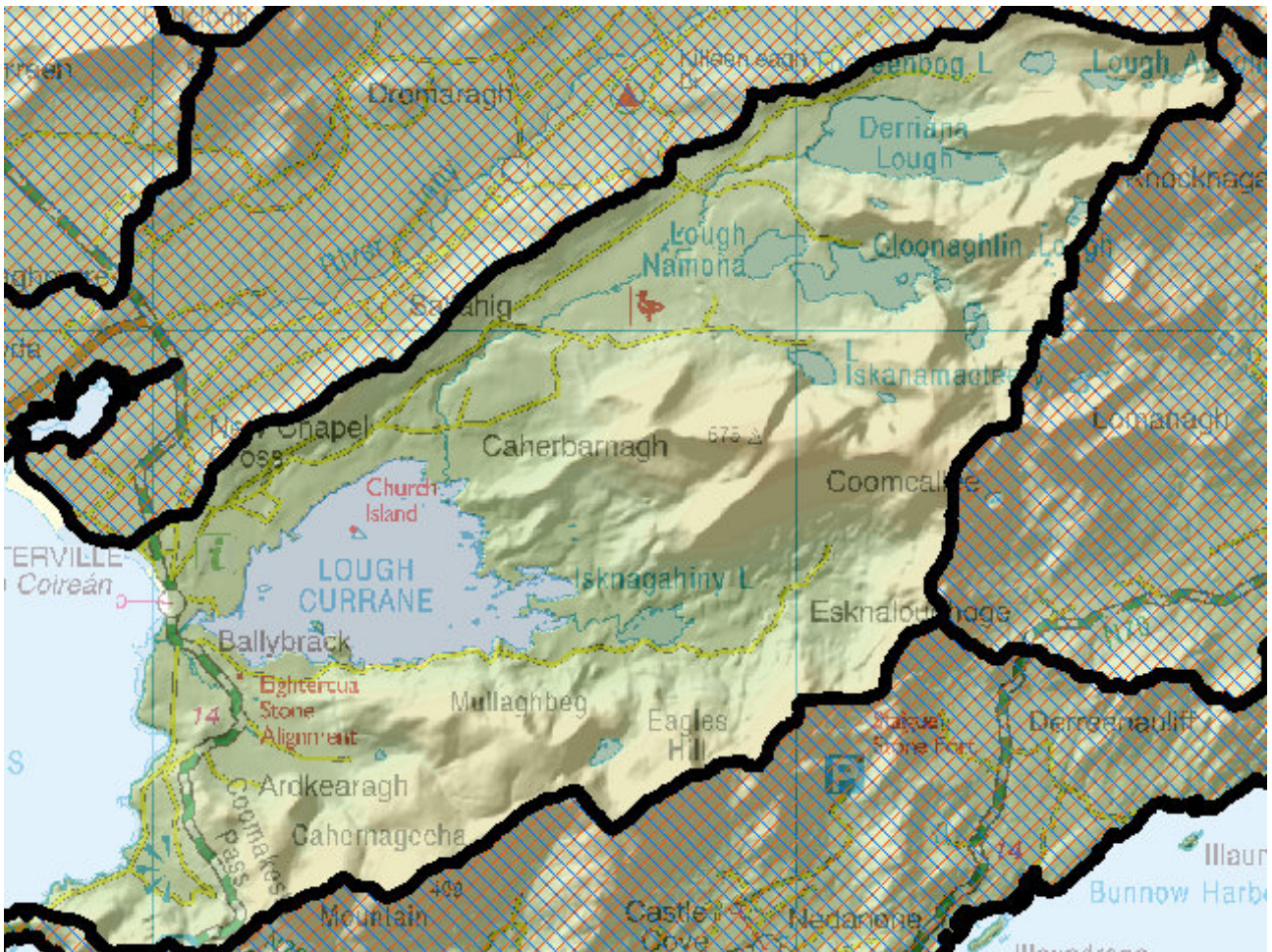


WFD Cycle 2

Catchment Dunmanus-Bantry-Kenmare

Subcatchment Finglasriver
[Waterville]_SC_010

Code 21_8

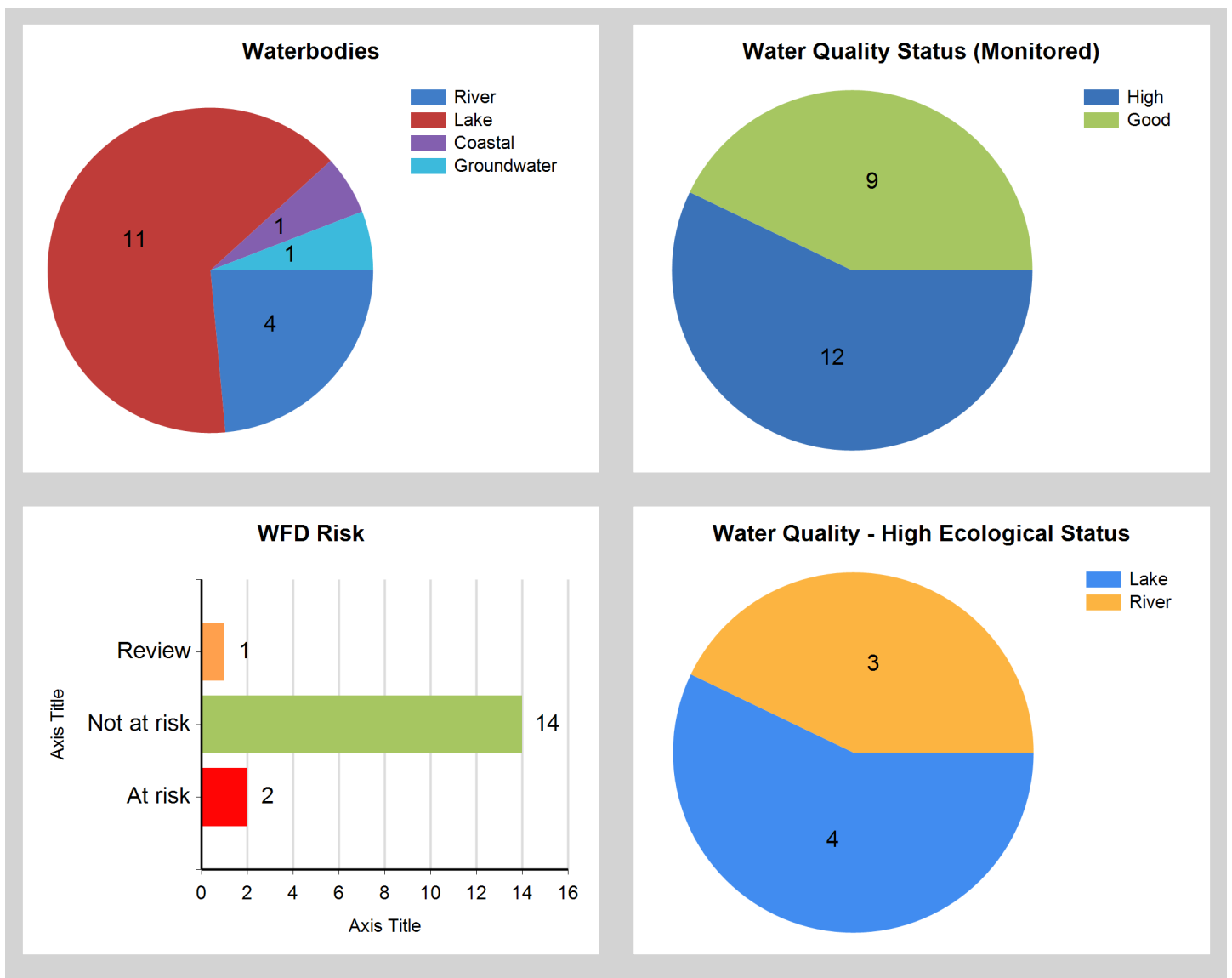


© Ordnance Survey Ireland. All rights reserved. Licence Number EN 0059208

Assessment Purpose

This assessment has been produced as part of the national characterisation programme undertaken for the second cycle of Water Framework Directive river basin management planning. It has been led by the EPA, with input from Local Authorities and other public bodies, and with support from RPS consultants.

The characterisation assessments are automatically generated from the information stored in the WFD Application. They are based on information available to the end of 2015 but may be subject to change until the final 2018-21 river basin management plan is published. Users should ensure that they have the most up to date information by downloading the latest assessment before use.

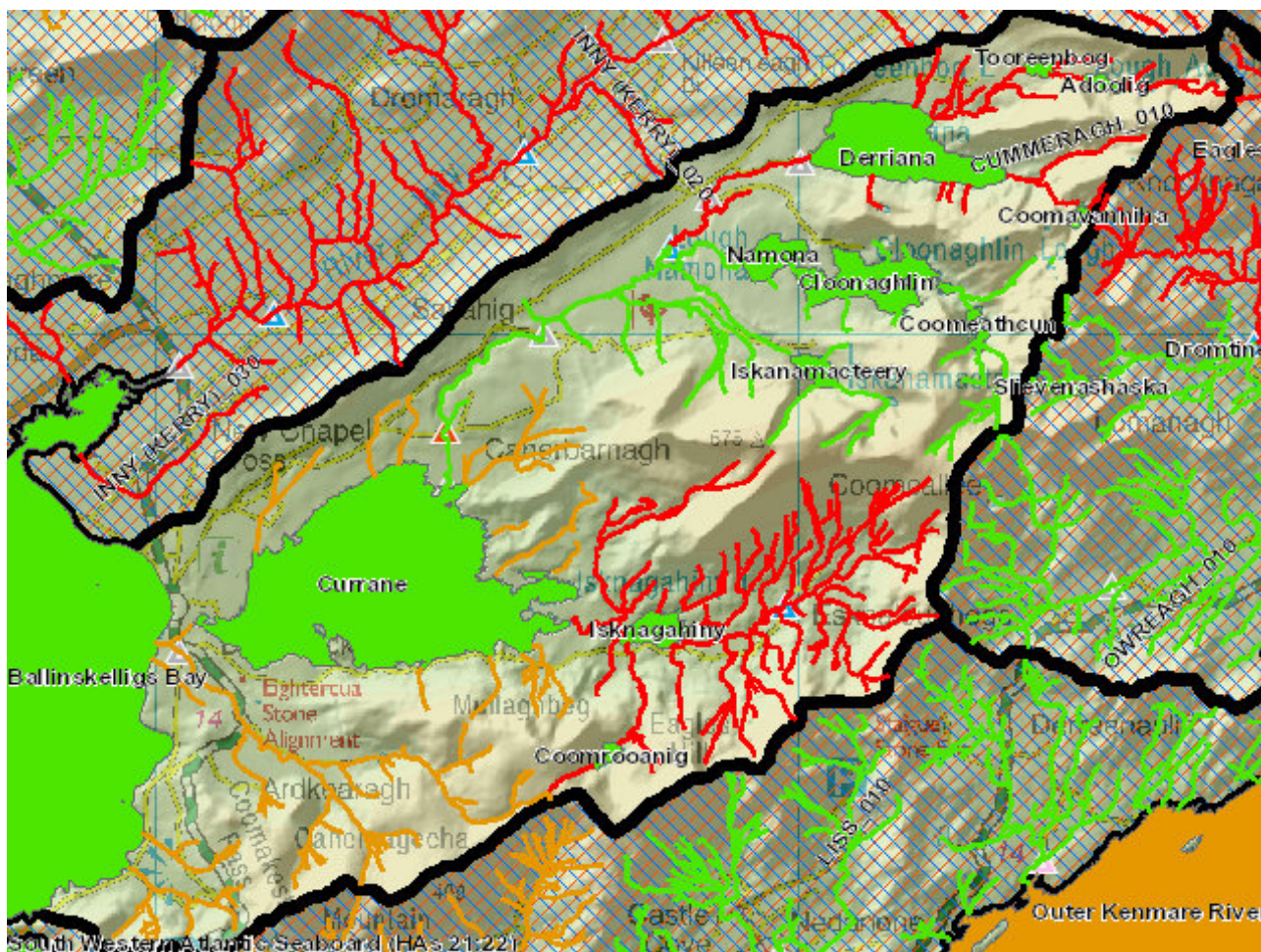


Evaluation of Priority Subcatchment Issues

This sub-catchment falls partially within a priority Freshwater Pearl Mussel (FPM) Catchment, the Cummeragh-Currane. There are no major pressures in this subcatchment as the monitored water bodies are achieving Good or High status. However KerryLIFE indicated that the FPM is at unfavourable conservation status. Of the 15 water bodies in this subcatchment, all 11 of the lake water bodies are NOT AT RISK. Of the remaining four river water bodies, the Cummeragh_020 is NOT AT RISK.

The Cummeragh_010, Cummeragh_020 and Isknagahiny Lough Stream_010 water bodies have High Status Objectives. The Cummeragh_020 has achieved High status (2010-2015) and so is meeting this objective. Both the Cummeragh_010 and Isknagahiny Lough Stream_010 are at Good status and so are failing this objective, putting these water bodies AT RISK. For Isknagahiny Lough Stream this is being driven by a Good RHAT score. The main pressure is silt which is being generated by forestry and associated practices, land reclamation, land drainage and erosion. The Finglas (Waterville)_010 has no monitoring data but is at REVIEW as there are also large land works in the subbasin and a new golf course being constructed. In addition, the invasive Japanese knotweed has been recorded. Further characterisation should help clarify if these are significant pressures.

Map Subcatchment Risk Map

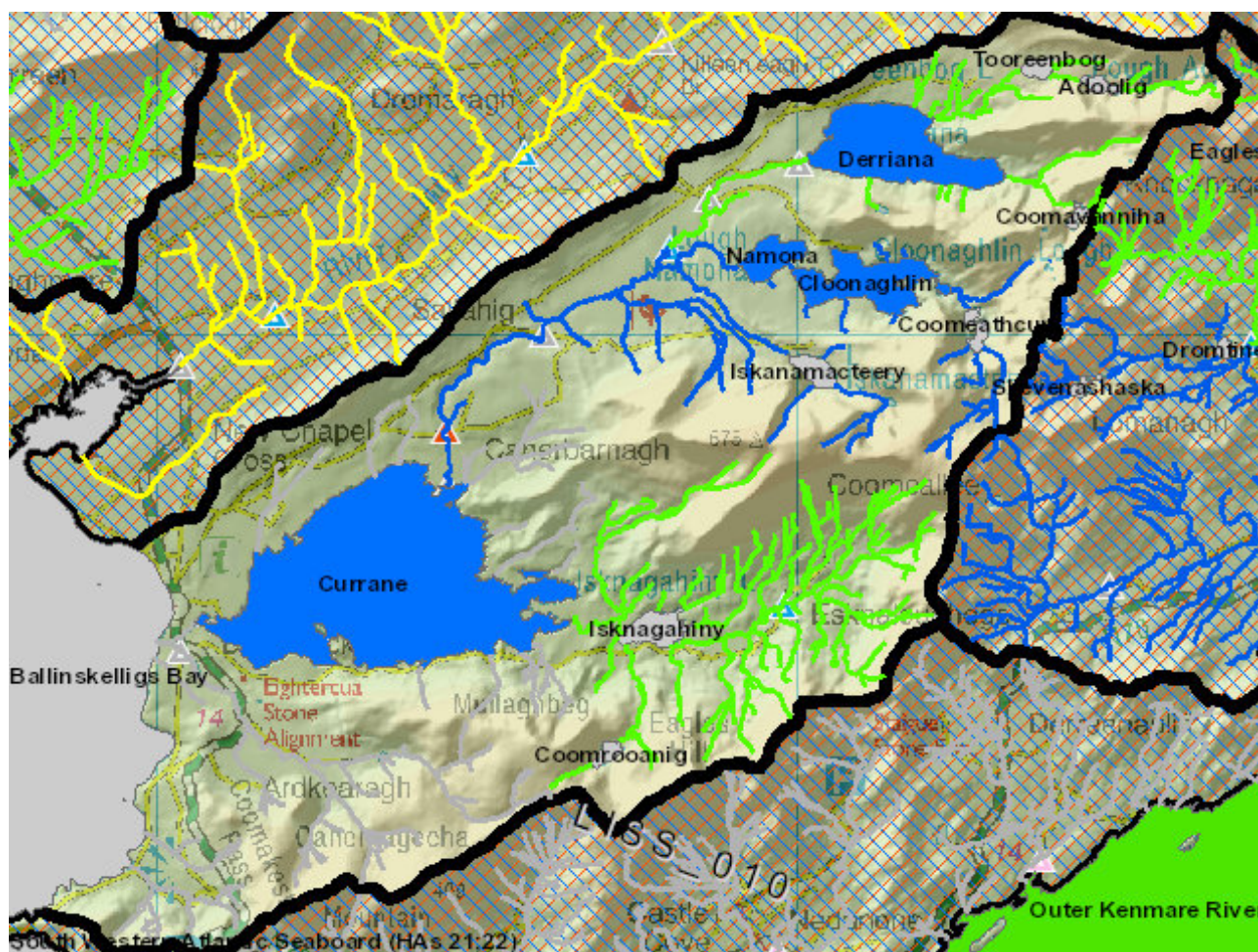


River And Lake Waterbodies: WFD Risk

The following river and lake waterbodies are in the subcatchment.

Code	Name	Type	WFD Risk	Significant Pressure
IE_SW_21C040400	CUMMERAGH_010	River	At risk	Yes
IE_SW_21I030100	ISKNAGAHINY LOUGH STREAM_010	River	At risk	Yes
IE_SW_21F051000	FINGLAS (WATERVILLE)_010	River	Review	No
IE_SW_21C040700	CUMMERAGH_020	River	Not at risk	No

Map Subcatchment Water Quality Status Map



River And Lake Waterbodies: Water Quality Status

The water quality status of river and lake waterbodies in the subcatchment is as follows.

Code	Name	Type	2007-09	2010-12	2010-15
IE_SW_21_372	Adoolig	Lake	Unassigned	Unassigned	Unassigned
IE_SW_21_443	Cloonaghlin	Lake	High	High	High
IE_SW_21_389	Coomavanniha	Lake	Unassigned	Unassigned	Unassigned
IE_SW_21_410	Coomeathcun	Lake	Unassigned	Unassigned	Unassigned
IE_SW_21_450	Coomrooanig	Lake	Unassigned	Unassigned	Unassigned
IE_SW_21C040400	CUMMERAGH_010	River	Good	Good	Good
IE_SW_21C040700	CUMMERAGH_020	River	High	High	High
IE_SW_21_457	Currane	Lake	Good	Good	High
IE_SW_21_449	Derriana	Lake	Unassigned	Unassigned	High
IE_SW_21F051000	FINGLAS (WATERVILLE)_010	River	Unassigned	Unassigned	Unassigned
IE_SW_21_437	Iskanamacteery	Lake	Unassigned	Unassigned	Unassigned
IE_SW_21_423	Isknagahiny	Lake	Unassigned	Unassigned	Unassigned
IE_SW_21I030100	ISKNAGAHINY LOUGH STREAM_010	River	High	High	Good
IE_SW_21_421	Namona	Lake	Good	High	High
IE_SW_21_377	Tooreenbog	Lake	Unassigned	Unassigned	Unassigned

Potentially Dependent Transitional and Coastal Waterbodies

The Transitional and Coastal waterbodies listed below intersect spatially with river and lake waterbodies in the subcatchment ...

Code	Name	Type	Local Authority	WFD Risk
IE_SW_200_0000	Ballinskelligs Bay	Coastal	Kerry County Council	Not at risk

Potentially Dependent Groundwater Waterbodies

The groundwaters listed below intersect spatially with river and lake waterbodies in the subcatchment ...

Code	Name	Type	Local Authority	WFD Risk
IE_SW_G_019	Beara Sneem	Groundwater	Kerry County Council	Not at risk

Protected Areas intersecting River and Lake Waterbodies

The Protected Areas listed below intersect spatially with river and lake waterbodies in the subcatchment ...

Code	Name	Type	Waterbody Name	Association Type
IEPA1_SW_21_457	Currane	Drinking Water	Currane	Within Protected Area
IEPA1_SW_21F051000	FINGLAS (WATERVILLE)_010	Drinking Water	FINGLAS (WATERVILLE)_010	Within Protected Area

Pressures

Below is a list of all significant pressures identified in the subcatchment.

Code	Name	WFD Risk	Pressure Category	Pressure Sub Category
IE_SW_21C040400	CUMMERAGH_010	At risk	Anthropogenic Pressures	Unknown
IE_SW_21I030100	ISKNAGAHINY LOUGH STREAM_010	At risk	Hydromorphology	River Bank Erosion
IE_SW_21I030100	ISKNAGAHINY LOUGH STREAM_010	At risk	Forestry	Forestry

Further Characterisation Actions

The following further characterisation actions have been identified. These are necessary to help understand more fully issues in the subcatchment and their likely cause.

Code	Name	Action	Responsible Organisation
IE_SW_21F051000	FINGLAS (WATERVILLE)_010	IA3 Determination of Water Quality (unassigned waterbody)	Kerry County Council
IE_SW_21I030100	ISKNAGAHINY LOUGH STREAM_010	IA8 High status RWB pressures	Kerry County Council
IE_SW_21C040400	CUMMERAGH_010	IA1 Provision of Information	Environmental Protection Agency